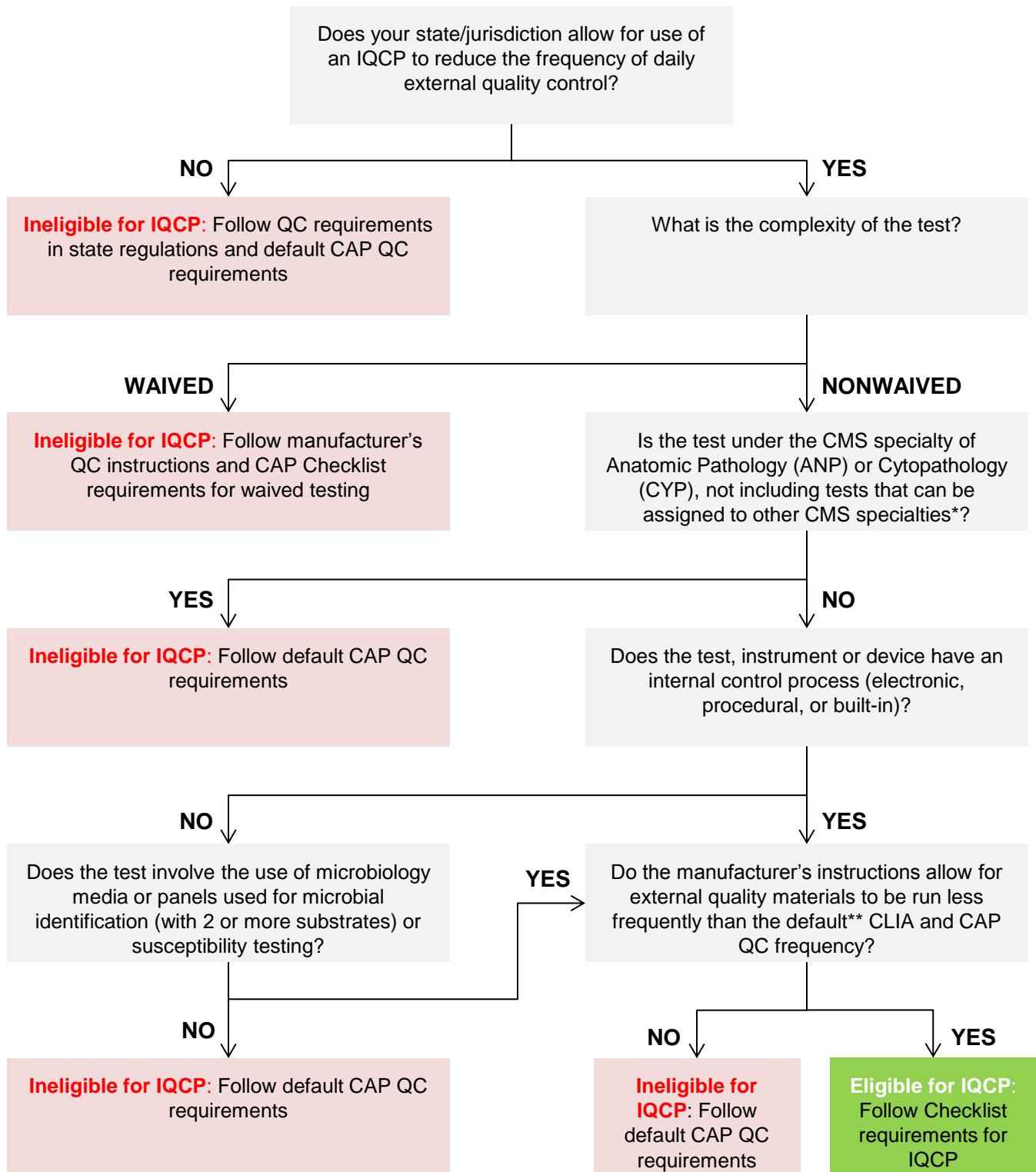


Eligibility Determination for Individualized Quality Control Plan (IQCP) Option



* ANP or CYP tests are ineligible for IQCP unless the testing can be billed under another CMS specialty.

** The default CAP QC frequency for external quality control materials is as follows:

- 1) Quantitative tests - two controls at different concentrations each day of patient testing, except for Coagulation tests (two levels every eight hours) and Blood Gas testing (one level every eight hours)
- 2) Qualitative tests – positive and negative controls each day of patient testing.